

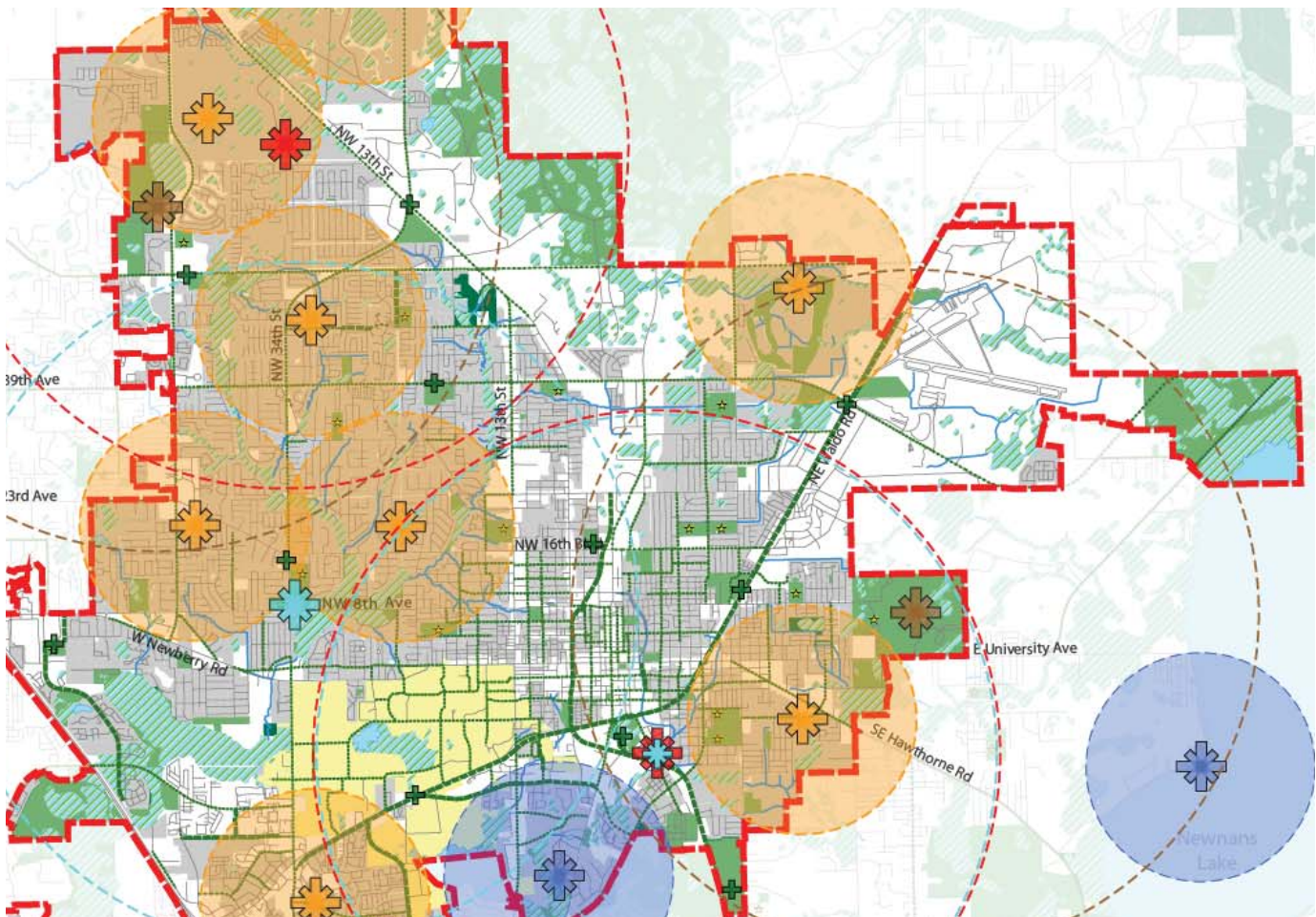
CITY OF GAINESVILLE, PARKS, RECREATION, AND CULTURAL AFFAIRS MASTER PLAN IMPLEMENTATION STRATEGY

Barth Associates Role: Principal-In-Charge, Parks and Recreation Planners

Project Budget: \$125,000, including subsequent assignments

Project Completion Date: On-going, 2012

Barth Associates is currently working with the City of Gainesville to develop an Implementation Strategy for the City's Parks, Recreation, and Cultural Affairs Master Plan. Dr. Barth was previously the Principal-in Charge of the PRCA Master Plan, completed in 2012. The Plan included an existing system analysis; needs and priorities assessment; long range vision; and a detailed funding, implementation, and plan. Dr. Barth facilitated staff and public workshops throughout the process to develop ideas and build consensus regarding key issues. Recently the voters of Alachua County approved a \$130 million "Wild Spaces, Public Places" bond referendum to implement the City's Master Plan and other County-wide initiatives.



Contact Information:

Michelle Park, CPRP - Assistant Director
parkma@cityofgainesville.org
(352) 393.8364
City of Gainesville Parks, Recreation and
Cultural Affairs Department
PO Box 490, Station 24
Gainesville, FL 32602

"Dave's leadership, attention to detail, ability to build group consensus and many other related talents and skills, brought great success to the departmental Master Plan and built trust and respect throughout the department and with our citizens. Since the adoption of the Master Plan, I've hired Dave to develop our Implementation Plan so we continue to move forward on getting ready for a ballot initiative. I cannot speak highly enough about Dave's abilities and professionalism. I have great respect for him and his efforts!"

- Michelle Park, Assistant Director